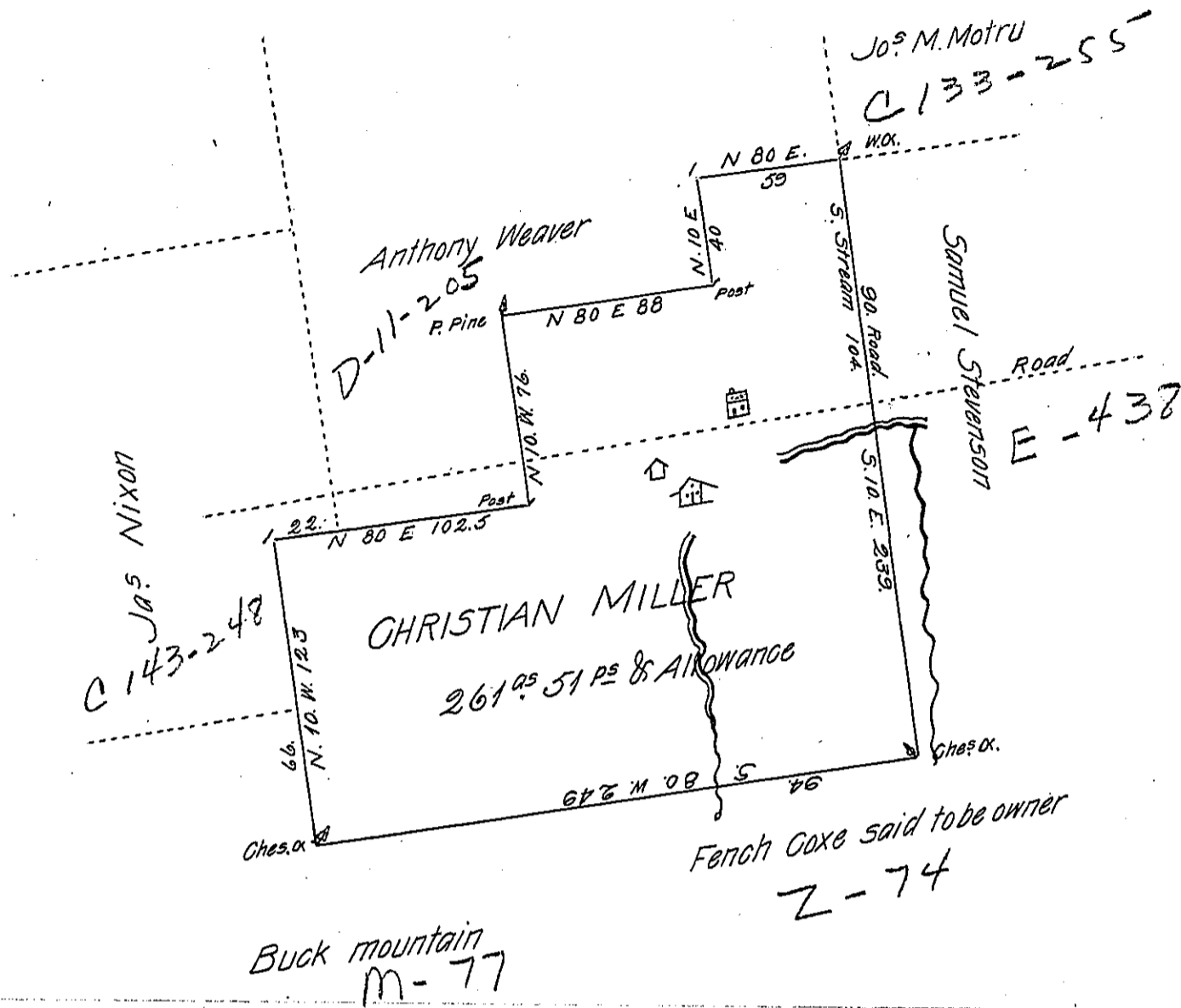


See A. 46. 93

Sug-Loaf -
Luzerne.



A draught of a tract of land containing two hundred and sixty one Acres and fifty one perches and allowance of Six per cent for Roads Situate in the Township of Sugar Loaf County of Luzerne adjoining land of Anthony Weaver, Including an improvement begun the first day of March 1799 and Continued, Consisting of two Loghouses a Barn and twenty or more acres of Improved land Surveyed the 30th day of June 1812 for Christian Miller an Actual Settler on the premises in pursuance of a Warrant dated the 6th day of February 1812

by

Jonathan Stevens D.S.

Andrew Porter Esquire S. Gen!

IN TESTIMONY that the above is a copy of the original remaining on file in the Department of Internal Affairs of Pennsylvania, made conformably to an Act of Assembly approved the 16th day of February, 1833, I have hereunto set my Hand and caused the Seal of said Department to be affixed at Harrisburg, this thirteenth day of February 1906.

Seal R. Brown
Secretary of Internal Affairs.